

The background of the slide features a close-up of a human eye with a blue iris, looking slightly to the left. The eye is overlaid with a semi-transparent blue circular graphic that contains binary code (0s and 1s) arranged in concentric circles and lines, suggesting a digital or data theme. The overall color palette is light blue and white.

---

# EMAS DECLARATION

## TWO THOUSAND TWENTY

2019 Data

---

**VAL D'IZÉ SITE**  
(Ille et Vilaine)



# 01

## THE COMPANY

- 8** Kwizda GmbH
- 9** Kwizda France site description – Val d’Izé
- 10** Our key figures
- 11** Our products
- 11** ICPE Regime

# 02

## THE ENVIRONMENTAL POLICY

- 14** Our integrated management system
- 15** Kwizda France Biocides unit QHSE policy

# 03

## LIFE CYCLE AND ENVIRONMENTAL ASPECTS

- 18** Our life cycle analysis
- 19** Our environmental analysis

# 04

## ENVIRONMENTAL PERFORMANCE DATA AND BASIC INDICATORS

- 22** Energy consumption
- 24** Efficient use of raw materials
- 25** Water consumption
- 26** Waste Management
- 27** “Biodiversity” Indicator
- 28** Atmospheric emissions
- 29** Finished products

# 05

## ENVIRONMENTAL PERFORMANCE

- 32** 2019 programme
- 34** Environmental objectives for the 2020 programme
- 36** Applicable environmental legal exigencies
- 38** Validation of the Environmental Declaration



# EMAS DECLARATION

---

2020

---

In accordance with Regulation (EC) No 1221/2009 of the European Parliament and of the Council of 25 November 2009 on the voluntary participation by organisations in a Community eco-management and audit scheme (EMAS), repealing Regulation (EC) No 761/2001 and Commission Decisions 2001/681/EC and 2006/193/EC, as amended by

- // COMMISSION REGULATION (EU) 2017/1505 of 28 August 2017 amending Annexes I, II and III to Regulation (EC) No 1221/2009 of the European Parliament and of the Council on the voluntary participation by organisations in a Community eco-management and audit scheme (EMAS),
- // COMMISSION REGULATION (EU) 2018/2026 of 19 December 2018 amending Annex IV to Regulation (EC) No 1221/2009 of the European Parliament and of the Council on the voluntary participation by organisations in a Community eco-management and audit scheme (EMAS).

Kwizda France  
Val d'Izé Site  
ZA du Bourgneuf, Route de Dourdain  
35450 Val d'Izé

Code N.A.F: 4675Z  
Declaration period: 2019

## INTRODUCTION

This environmental declaration is published within the framework of the Kwizda Biocides division EMAS registration. In accordance with the group's sustainable development policy, we are committed to protecting the environment and continuously improving environmental performance in our activities.

This declaration provides information on the plant's performance and covers the most significant impacts of the year for 2019.

## **THE COMPANY**

**WE MEET OUR CUSTOMERS'  
REQUIREMENTS BY MANUFACTURING HIGH  
QUALITY, SAFE AND ENVIRONMENTALLY  
FRIENDLY PRODUCTS.**



**Kwizda**  
France

# 01

## THE COMPANY

The Kwizda group, founded in 1853, is an Austrian family business with a turnover of 1 billion euros and 1,425 employees.

Since the 1990s, the group has focused on developing its presence throughout Europe, and not just in Austria, thus covering the market at the European level (France, Italy, Germany, Spain) and expanding operation of sites as well as distribution channels in Hungary, France, Italy and Romania.

Kwizda Group is one of the leaders in the distribution of pharmaceutical and phytosanitary products in Austria.

In order to complement its activity, the group has chosen to develop a Biocides competence centre in France, Kwizda France.

In 1994, Kwizda acquired a small French company specialised in biocides.

The business experienced strong growth during the first years. Today, between its headquarters in Marly le Roi and its production site in Val d'Izé, no fewer than 44 full-time employees, as well as some temporary workers, participate in the annual production.

Active in 37 countries, our company bases its strategy on the support of biocidal active ingredients, development of innovative insecticide formulations and establishment of strong commercial partnerships with quality distributors to cover the European market.

Our major role is to offer our customers indispensable and inseparable key skills (regulation, marketing, production, and research and development) in order to transform market constraints into strengths.



## VAL D'IZÉ KWIZDA FRANCE

### SITE DESCRIPTION

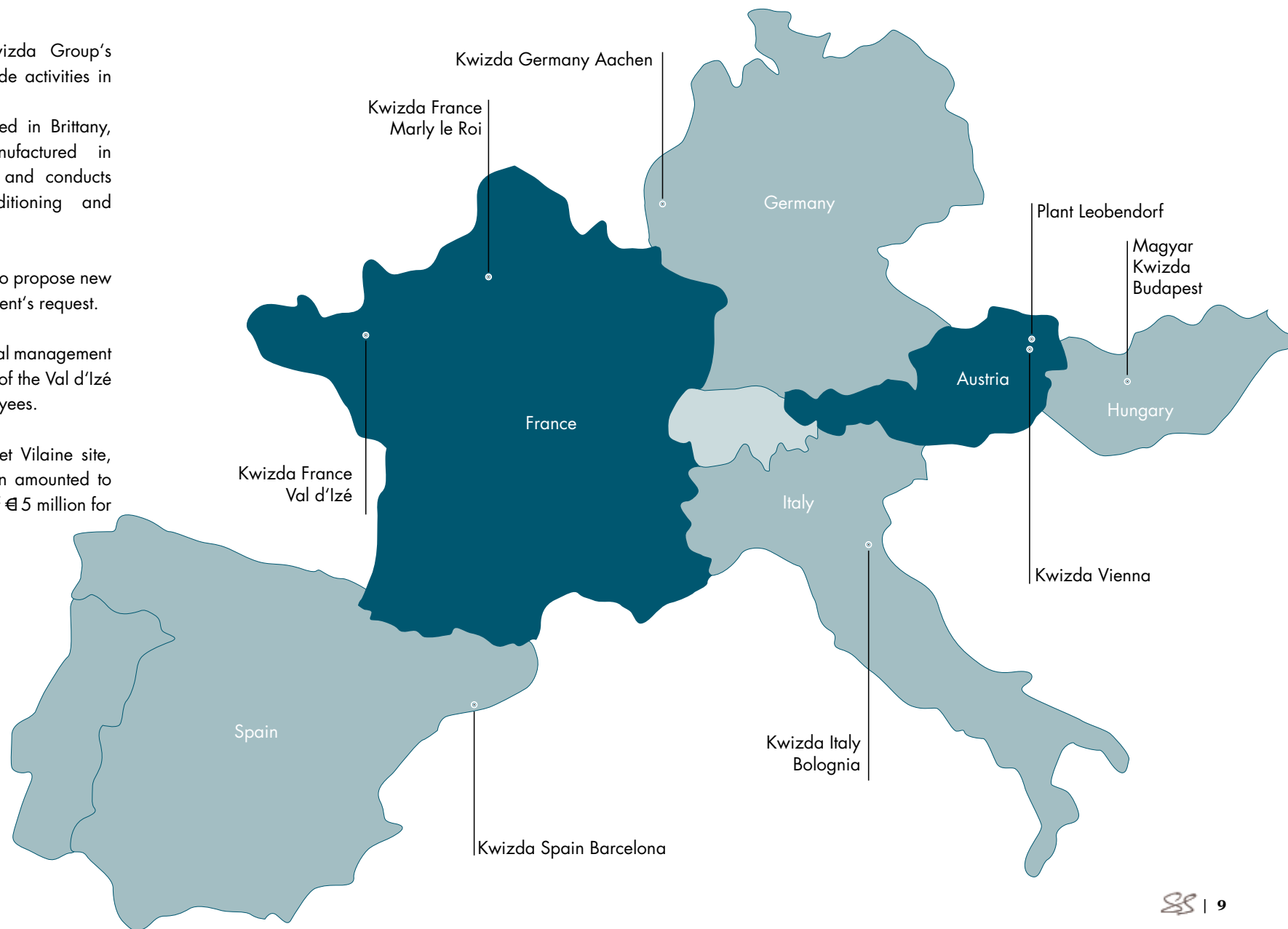
Kwizda France is the Kwizda Group's competence centre for Biocide activities in Europe.

The Val d'Izé factory, located in Brittany, receives formulations manufactured in Leobendorf (Kwizda Agro) and conducts the deconcentration, conditioning and packaging of the product.

This flexibility also allows us to propose new packaging adapted to the client's request.

The scope of the environmental management system includes the activities of the Val d'Izé production site and its employees.

With 30 people at the Ile et Vilaine site, on 31/12/2019, production amounted to 536 tonnes and a turnover of €5 million for Kwizda Biocides.



## OUR KEY FIGURES

### GENERAL INFORMATION

Capital **112 515 €**

<b>Kwizda France</b>	Company name
<b>S.A.S.</b>	Legal form
<b>30 avenue de l'amiral Lemonnier ; 78160 Marly-le-Roi</b>	Headquarters
<b>ZA de Bourgneuf, Rte de Dourdan, 35450 Val d'Izé</b>	Production Site
<b>394 788 582 00010</b>	Siret No.
<b>4675Z</b>	APE code

### THE ESTABLISHMENT IS LOCATED IN VAL D'IZÉ ON PARCEL NO. L801P

Grounds **13.694 m<sup>2</sup>**

<b>2 750 m<sup>2</sup></b>	Paved Area (parking lots + unloading area)
<b>3.200 m<sup>2</sup></b>	Built-up area
<b>1.211 m<sup>2</sup></b>	Production Zone (production lines, laboratory, maintenance, etc.)
<b>1.480 m<sup>2</sup></b>	Warehouse (raw material + finished products)
<b>233 m<sup>2</sup></b>	Administrative parts (offices, meeting rooms, ...)
<b>80 m<sup>2</sup></b>	Social offices
<b>270 m<sup>2</sup></b>	Docks / shipping
<b>508 m<sup>2</sup></b>	Mezzanine

### OUR KWIZDA BIOCIDES STAFF

Val d'Izé **30** contractual persons

<b>13</b>	Production
<b>5</b>	Supply chain
<b>1</b>	Customer service
<b>3</b>	Quality
<b>2</b>	Maintenance
<b>1</b>	Direction
<b>1</b>	Purchases
<b>2</b>	Warehousemen
<b>1</b>	Plant controller
<b>1</b>	Finance / Accounting
<b>15</b>	Temporary workers (in season)

Marly-le-Roi **5** people

<b>2</b>	Finance / Accounting
<b>2</b>	Regulatory
<b>1</b>	Marketing and Communication

Other  
geographic locations

**9** people

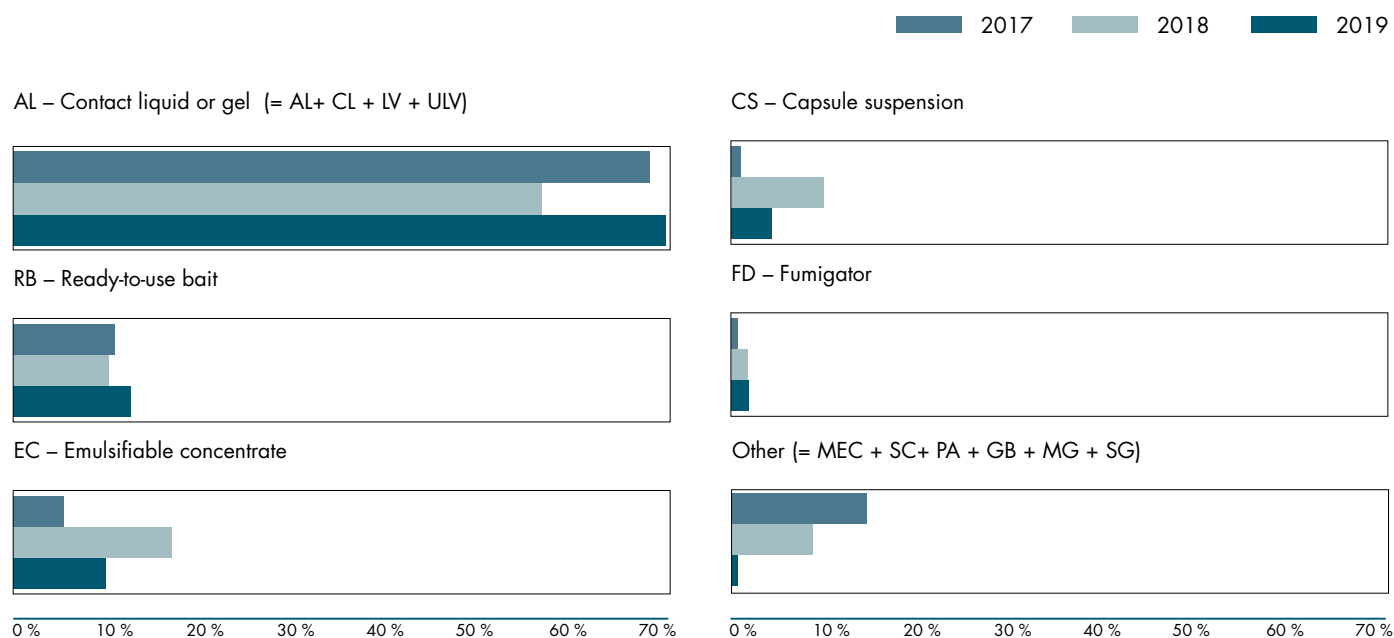
<b>1</b>	Direction
<b>1</b>	Regulatory
<b>1</b>	Product management
<b>6</b>	Sales

## OUR PRODUCTS

WE PACKAGE NON-AGRICULTURAL PEST CONTROL PRODUCTS FOR THE FIGHT AGAINST

ants  
flies  
cockroaches  
mosquitoes  
termites  
etc.

OUR PRODUCTS ARE DISTRIBUTED IN DIFFERENT FORMS



## ICPE REGIME

Our site is subject to declaration under section 4510 "hazardous to the aquatic environment, category acute 1 or category chronic 1"

**The total quantity likely to be present at the installation is:**

1. Greater than or equal to 100t (A-1)
2. Greater than or equal to 20t but less than 100t (DC)

The quantity present on our site is approximately 64 tonnes.

# **THE ENVIRONMENTAL POLICY**

**WE CONSIDER RISK MANAGEMENT TO BE A CRUCIAL TOOL FOR COMPANY MANAGEMENT AND FOR AVOIDING ERRORS IN EVERY ASPECT OF OUR BUSINESS.**



DOV  
PROFESSIONAL  
DANGER  
HYDROLYZABLE



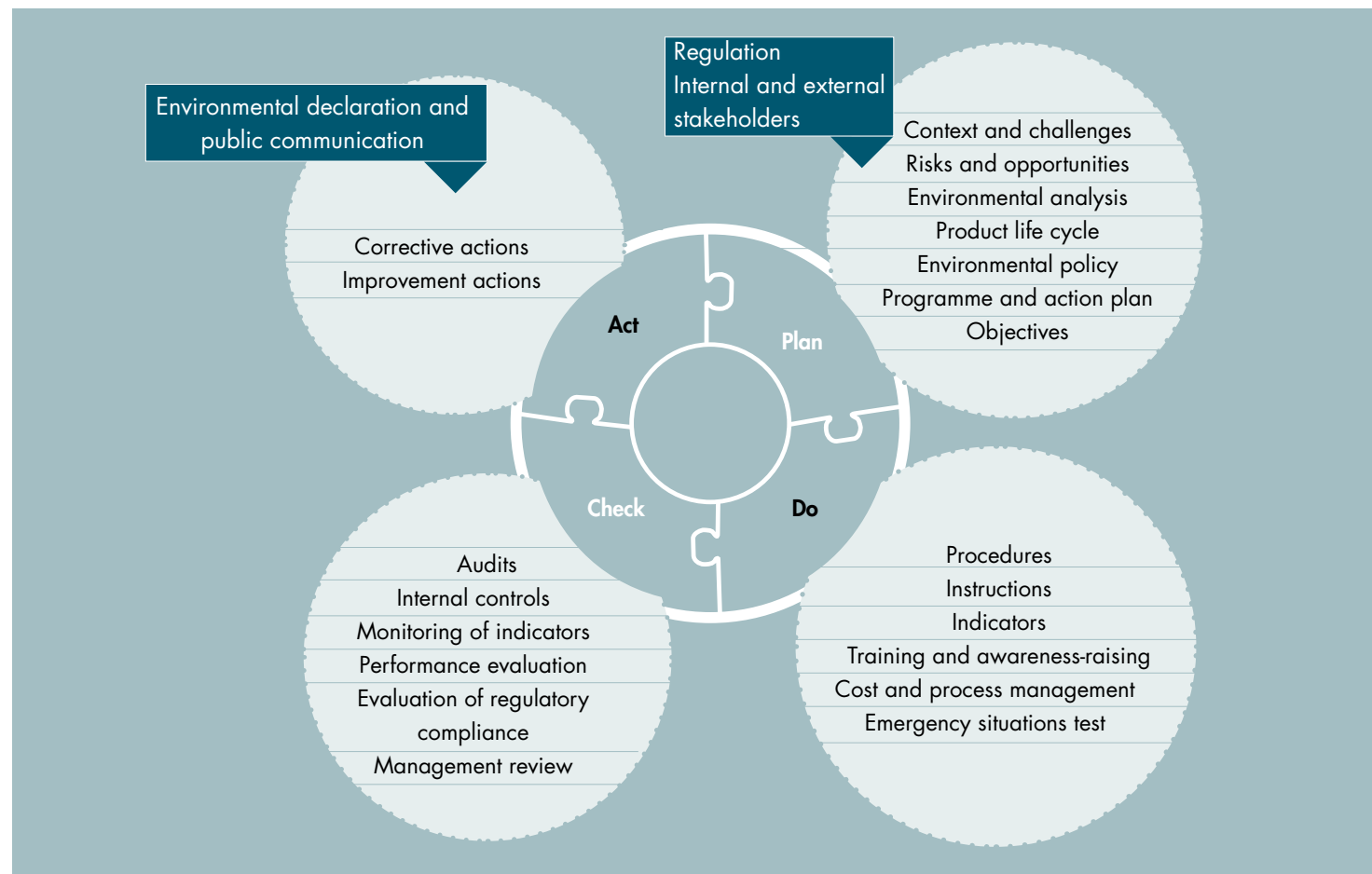
# 02

## THE ENVIRONMENTAL POLICY

### OUR INTEGRATED MANAGEMENT SYSTEM

Our integrated management system (IMS) aims to translate the objectives of the company policy into suitable methods, procedures and processes, including the corresponding documentation, while taking into account all regulations and standards in force (ISO 9001, ISO 14001, EMAS, ISO 45001).

Our two environmental certifications are proof of our commitment to work as harmoniously as possible within the ecosystems of the planet. We are thus part of the small circle of companies in Europe which have been able to obtain EMAS registration after having met its requirements for excellence.



## KWIZDA FRANCE BIOCIDES UNIT QHSE POLICY

**Kwizda**  
Biocides

<b>Politique QHSE / QHSE Policy</b>	Index:	8
	Doc.ID:	AG VI RE 1.3.7.1
	Validation:	26.06.2020

Les domaines d'application de nos certifications sont :

Certification	Entité	Site	Domaine d'application
ISO 9001 : V2015 ISO 14001 : V2015 ISO 45001 : V2018	Kwizda France SAS	Marly Le Roi, France	Développement, finances & administration, gestion stratégique et opérationnelle marketing, gestion commerciale et développement du portefeuille clients.
		Val d'Izé, France	Développement, production et emballage de biocides.

Scopes of our certifications are:

Certification	Organisation	Site	Scope
ISO 9001: V2015 ISO 14001: V2015 ISO 45001: V2018	Kwizda France SAS	Marly Le Roi, France	Development, finance & administration, strategic and operative controlling, marketing, business development, business & portfolio management.
		Val d'Izé, France	Development, manufacturing and packing of biocides.

**Kwizda**  
Biocides

<b>Politique QHSE / QHSE Policy</b>	Index:	8
	Doc.ID:	AG VI RE 1.3.7.1
	Validation:	26.06.2020

Pour développer durablement notre activité, nous devons anticiper sans cesse pour satisfaire les exigences de nos clients, de nos partenaires et des parties intéressées internes et externes dans le strict respect des lois, règlements et de la Politique Groupe.  
To sustainably develop our business, we must constantly anticipate to meet the requirements of our customers, partners and internal and external stakeholders in strict compliance with laws, regulations and Group Policy.

Kwizda France s'est donc engagé dans une démarche de progrès continue depuis 2015, et nous voulons aujourd'hui pérenniser ce processus d'amélioration continue basé sur les 4 standards que sont : l'ISO 9001 : V2015, l'ISO 14001 : V2015, l'ISO 45001 : V2018 et EMAS V2018.

Kwizda France is committed to continuous improvement since 2015, and we want to perpetuate this process of continuous improvement base on the four standards: ISO 9001: V2015, ISO 14001: V2015, ISO 45001: V2018 and EMAS V2018.

#### NOTRE VOLONTÉ SE RÉFLÈTE SUR DES ENGAGEMENTS GÉNÉRAUX ET SPÉCIFIQUES:

- ✓ Avoir un personnel qualifié, formé et informé,
  - ✓ Améliorer en permanence nos processus,
  - ✓ Publier périodiquement nos performances environnementales.
- THIS WILL BE REFLECTED ON GENERAL AND SPECIFIC COMMITMENTS:
- ✓ Have qualified, trained and knowledgeable workforce,
  - ✓ Continuously improve our processes,
  - ✓ Periodically publish our environmental performance.

#### POUR LA SANTÉ ET LA SÉCURITÉ:

- ✓ Optimiser la veille réglementaire,
- ✓ Prévenir tout accident et réduire de façon permanente le nombre d'accidents, en encourageant les comportements responsables de la part de notre personnel,
- ✓ S'assurer qu'aucune priorité ne puisse s'exercer au détriment de la Santé et de la Sécurité.

#### FOR HEALTH AND SAFETY:

- ✓ Optimize regulatory monitoring,
- ✓ Prevent accidents and permanently reduce the number of accidents by encouraging responsible behavior on the part of our workforce,
- ✓ Ensure that no priority can be set to the disadvantage of Health and Safety.

#### POUR LA QUALITÉ DE NOS PRODUITS ET DE NOS SERVICES:

- ✓ Ecouter et satisfaire les exigences de nos clients et partenaires,
- ✓ Améliorer de façon permanente la qualité de nos produits et de nos services,
- ✓ Assurer la maîtrise de l'hygiène dans notre cycle industriel pour préserver la qualité de nos produits,
- ✓ Gérer un pilotage par processus menant sur des plans d'actions de réduction des risques pour l'ensemble des secteurs de l'entreprise.

#### FOR THE QUALITY OF OUR PRODUCTS AND OUR SERVICES:

- ✓ Listen and satisfy the requirements of our customers and partners,
- ✓ Permanently improve the quality of our products and services,
- ✓ Ensure the control of hygiene in our industrial cycle to preserve the quality of our products,
- ✓ Manage a process-based approach leading to risk reduction action plans for all sectors of the company.

#### POUR LA PROTECTION DE L'ENVIRONNEMENT:

- ✓ Diminuer le volume de nos déchets en recherchant de nouvelles sources de recyclage,
- ✓ Adopter le tri sélectif à tous les niveaux de l'entreprise,
- ✓ Préserver les ressources naturelles,
- ✓ Tout en limitant les risques industriels et par conséquent les pollutions de l'environnement.

#### FOR THE PROTECTION OF THE ENVIRONMENT:

- ✓ Reduce the volume of waste by continuous search for recyclable raw materials,
- ✓ Adopt selective waste separation at all levels of the company,
- ✓ Preserve natural resources,
- ✓ Minimize the risk of industrial incidents and prevent environmental pollution through permanent monitoring of technical risks and setting of suitable preventive actions.

C'est grâce à l'action de tous et par notre implication que nous réussirons à atteindre les objectifs que nous nous sommes fixés.  
It is through the action of all and through our involvement that we will succeed in achieving the objectives we have set ourselves.

Philippe DELACROIX  
Directeur de site / Plant Manager

Lucas SCHMIDTKE  
Directeur BU / BU Director

# **LIFE CYCLE AND ENVIRONMENTAL ASPECTS**

**AN ENVIRONMENTAL ANALYSIS AND A LIFE CYCLE ANALYSIS WERE CONDUCTED TO IDENTIFY THE MOST SIGNIFICANT ENVIRONMENTAL IMPACTS, AND TO WORK ON REDUCING THEM.**



**Kwizda**  
Biocides



# 03

# LIFE CYCLE AND ENVIRONMENTAL ASPECTS

## OUR LIFE CYCLE ANALYSIS

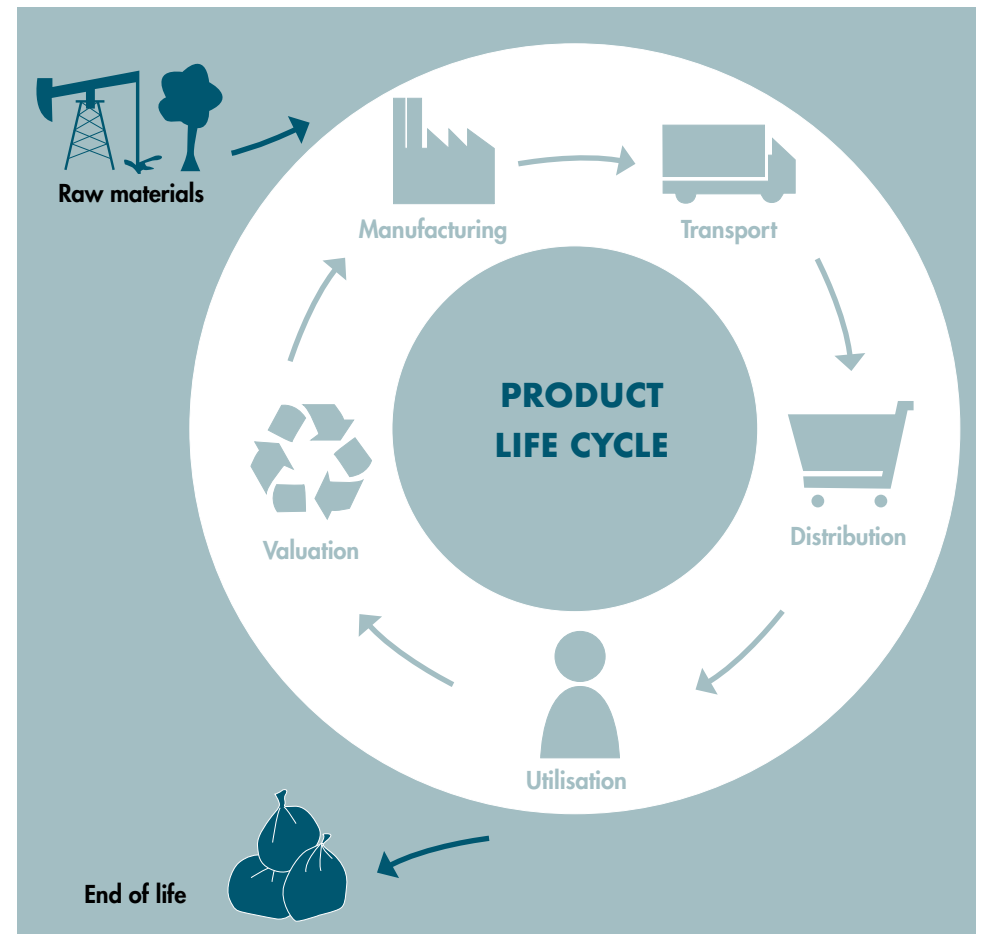
We have identified and determined our priority actions to act more effectively in reducing the most significant environmental impacts. This led us to carry out life cycle analyses for our products.

Our scope of influence extends from our suppliers of raw materials to end consumers through our distributors.

We principally work with regional suppliers who have implemented environmental management systems and are also engaged in environmental procedures (ISO 14001, PEFC, FSC, EMAS, etc.).

We have developed more environmentally friendly packaging by offering our customers all-cardboard packaging instead of all-plastic packaging. We continue our approach with the search for more environmentally friendly materials.

We support our distributors in reducing product labels and clearly indicating the conditions for recycling packaging to raise awareness among our end consumers.



## OUR ENVIRONMENTAL ANALYSIS

### THERE ARE TWO CATEGORIES OF SIGNIFICANT ENVIRONMENTAL ASPECT (SEA):

#### **Direct:**

Linked to our company's activities, products and services over which we exercise direct operational control.

#### **DIRECT (HAVING INFLUENCE ON THE PRESERVATION OF NATURAL RESOURCES)**

Consumption of raw materials (active ingredients, excipients, etc.)

Plastic consumption (primary packaging)

Consumption of packaging material (secondary and tertiary packaging)

Consumption of miscellaneous supplies (office automation, maintenance, etc.)

Water consumption

Gas consumption

Electricity consumption

#### **DIRECT (HAVING INFLUENCE ON THE PREVENTION OF POLLUTION)**

Hazardous waste management (HIW)

Non-hazardous waste management (NHIW)

Development of more "ecological" products

#### **Indirect:**

Linked to a third party acting on behalf of Kwizda France. Our company can influence these significant environmental aspects to some extent.

#### **INDIRECT (HAVING INFLUENCE ON THE PRESERVATION OF NATURAL RESOURCES)**

Use and disposal of our products by consumers

Atmospheric emissions from transport

#### **INDIRECT (HAVING INFLUENCE ON THE PREVENTION OF POLLUTION)**

Fuel consumption

Our general environmental objectives are described in our QHSE policy, broken down into quantified and measurable objectives. They are monitored and analysed in process reviews.

# ENVIRONMENTAL PERFORMANCE DATA AND BASIC INDICATORS

SUSTAINABLE AND RESPONSIBLE  
ENTREPRENEURSHIP IS ONE OF THE  
CORNERSTONES OF OUR CORPORATE  
PHILOSOPHY.



# 04

# ENVIRONMENTAL PERFORMANCE DATA AND BASIC INDICATORS

## ENERGY CONSUMPTION

**Objective:** Limit consumption of natural resources.

**Means:** Implementation of good practices to limit heat loss in order to reduce gas consumption.

Implementation of good practices to limit electricity consumption (e.g. turning off unnecessary lights during production, during the day).

Installation of more efficient technical equipment that consumes less energy.

**Results:** monitoring of consumption.

ENERGY TYPE	CONSUMPTION 2017	2017 RATIO CONSUMPTION/MANUFACTURED PRODUCTS (KG)	CONSUMPTION 2018	2018 RATIO CONSUMPTION/MANUFACTURED PRODUCTS (KG)	CONSUMPTION 2019	2019 RATIO CONSUMPTION/MANUFACTURED PRODUCTS (KG)
Gas (kWh)	222 241	0.27	202 220	0.31	258 000	0.48
Electricity (kWh)	332 012	0.40	272 881	0.42	285 823	0.53
<b>TOTAL (kWh)</b>	<b>554 253</b>	<b>0.67</b>	<b>475 101</b>	<b>0.73</b>	<b>543 823</b>	<b>1.01</b>

Gas consumption based on UDD\* (Rennes Saint Jacques de la Lande): as gas is mainly used for heating buildings, consumption fluctuates depending on the year => results are directly linked to climatic conditions.

\*The Unified Day Degree (UDD) is the difference between the outside temperature and a reference temperature that allows estimates of the thermal energy consumption needed to keep a building comfortable in the harshness of winter or the heat of summer. The usual reference is 18° C.

**The volume of gas and electricity consumption in 2019 increased in 2019 for the following reasons:**

// Less favourable climatic conditions than in previous years:

- the quantity of precipitated water increased by +8% (+61.9mm) compared to 2018
- the number of hours of sunshine decreased by -2.2% (-43h) compared to 2018.

// Increase in the number of opening hours for the workshop (increase in the number of night shifts vs 2018).

// Increase in the volume of hot water in production (= gas consumption) via a different distribution in the product mix (RB product category showing notable growth).

**Actions taken in 2019:**

// In order to optimise brightness in the building, all of the skylights were cleaned.

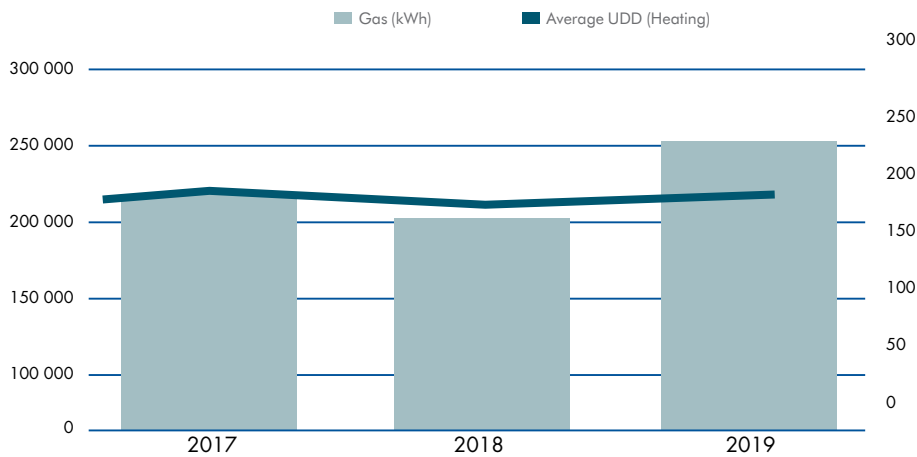
// In order to limit heat loss from the production area to the warehouse, strip curtains have been added between production and the warehouse.

// Installation of presence detectors in passage areas.

// Installation of a programmer for the boiler.

// Continued switch to LED usage throughout the building.

**GAS CONSUMPTION/UDD AVERAGE**



## EFFICIENT USE OF RAW MATERIALS

**Objectives:** Limit consumption of raw materials. Develop more “ecological” products for our customers.

**Means:** The consumption of raw materials is monitored and analysed to minimise losses. Purchases are made on a just-in-time basis to avoid losses and dead stock. Different departments focus their projects on products that are more respectful toward the environment and on reducing the weight of packaging and overpacking.

**Results:** raw material purchases.

TYPE	QUANTITY 2017	2017 RATIO QUANTITY/ PRODUCTION (KG)	QUANTITY 2018	2018 RATIO QUANTITY/ PRODUCTION (KG)	QUANTITY 2019	2019 RATIO QUANTITY/ PRODUCTION (KG)
Plastic film (blister in m <sup>2</sup> )	67 612	0,08	35 585	0,05	14 611	0,03
*Metal packaging (barrels, covers, etc. in units)	180 261	0,22	115 215	0,18	184 154	0,34
**Plastic packaging (BF, syringe, pot, bottle, etc. in units)	15 138 505	18,23	19 061 967	29,19	25 678 211	47,90
Labels (in units)	21 968 000	26,46	15 652 760	23,97	16 917 941	31,56
Cardboard (cases, cartons, boxes, etc. in units)	6 453 933	7,77	4 384 008	6,71	5 357 973	9,99
Active ingredients (in kg)	195 573	0,24	11 580	0,02	16 294	0,03
Excipients (in kg)	42 016	0,05	46 734	0,07	77 387	0,14
*Cotton (in units)	2 592 000	3,12	2 592 000	3,97	2 592 000	4,84
Plastic film/corners/pallets (in units)	40 541	0,05	16 085	0,03	3690	0,007

We continue our transition from 100% plastic to 100% cardboard secondary packaging, launched in the second half of 2017, with 82% of items changed by 31/12/2019. This translates into a significant reduction in our consumption of plastic film (blister), and an increase in our consumption of cardboard.

Raw material consumption results are linked to market demand. In fact, consumers have a preference for very small packages (2 to 4 g of product) rather than larger packages. We are observing this decision through the growth in primary plastic packaging. This trend persists over time. Note that amounts of active ingredients and excipients increase in equal proportions.

\* : The “Metal packaging” and “Cotton” categories were added in 2019 to refine our raw material categories.

\*\* : From 2019, more detailed accounting for plastic components.



## WATER CONSUMPTION

**Objective:** Limit consumption of natural resources

**Means:** Maintain good practices to limit water loss.

In 2018, installation of a dedicated water meter for the administrative area in order to better manage our consumption between production and administration.

**Results:**

CONSUMPTION	2017		2018		2019	
	CONSUMPTION	RATIO OF CONSUMPTION/ MANUFACTURED PRODUCTS (KG)	CONSUMPTION	RATIO OF CONSUMPTION/ MANUFACTURED PRODUCTS (KG)	CONSUMPTION	RATIO OF CONSUMPTION/ MANUFACTURED PRODUCTS (KG)
Water (Production) (m <sup>3</sup> )	NA	NA	NA	NA	424	0,0008
Water (administrative portion) (m <sup>3</sup> )	NA	NA	NA	NA	180	0,0003
Total water (m <sup>3</sup> )	620	0,0008	622	0,0010	604	0,0011

The water used in our factory comes from the Pays de Vitré community. We find that our water consumption is very limited. Our use of natural resources is therefore low. Water consumption in 2019 is under control compared to 2018. In 2019, a project to find a cleaning process for plastic drums that consumes less water was launched.

## WASTE MANAGEMENT

**Objective:** Limit environmental pollution.

**Means:** Selective sorting of non-hazardous waste.

In 2019, paper sorting implemented. → € Newly upgraded deposit.

Raise staff awareness of the separation of hazardous/non-hazardous waste.

### Results: Hazardous Industrial Waste (HIW)

WASTE TYPE	VOLUME (T) 2017	RATIO 2017 VOLUME/PRODUCTION (T)	VOLUME (T) 2018	RATIO 2018 VOLUME/PRODUCTION (T)	VOLUME (T) 2019	RATIO 2019 VOLUME/PRODUCTION (T)
Contaminated water	131,9	0,16	112,72	0,17	128,56	0,24
Mixed WEEE	0,00	0,00	0,00	0,00	0,012	0,00
Soiled empty packaging	5,10	0,006	4,10	0,006	2,23	0,004
Solid Hazardous Waste	44,00	0,05	43,28	0,07	49,34	0,09
<b>TOTAL</b>	<b>181,00</b>	<b>0,22</b>	<b>160,10</b>	<b>0,25</b>	<b>180,14</b>	<b>0,34</b>

Our contaminated water only comes from cleaning lines or preparation equipment before each new production to limit cross-contamination. The volume of contaminated water discharged in 2019 is higher than in previous years, due to improper handling during work in the unloading/loading area.

The hazardous solid waste volume increase is linked to a non-production waste stream: a regulatory change concerning destruction of products.

### Results: Non-Hazardous Industrial Waste (NHIW)

WASTE TYPE	VOLUME (T) 2017	RATIO 2017 VOLUME/PRODUCTION (T)	VOLUME (T) 2018	RATIO 2018 VOLUME/PRODUCTION (T)	VOLUME (T) 2019	RATIO 2019 VOLUME/PRODUCTION (T)
Rolling bin	-	-	6,40	0,010	8,16	0,015
Other Non-Hazardous Waste	26,10	0,031	5,72	0,009	1,64	0,003
Sub-total, non-recovered waste	26,10	0,031	12,12	0,019	9,80	0,018
<b>RECYCLED WASTE</b>						
Cardboard bales	42,40	0,051	-	-	-	-
Cardboard	-	-	45,90	0,070	51,31	0,096
Scrap metal	0,50	0,0006	0,96	0,002	0,00	0,00
Plastic	6,60	0,008	5,73	0,009	4,06	0,008
Glassine	0,70	0,0008	2,33	0,004	4,24	0,008
Sub-total, recycled waste	50,20	0,06	54,92	0,08	59,61	0,11
<b>TOTAL</b>	<b>76,30</b>	<b>0,09</b>	<b>67,04</b>	<b>0,10</b>	<b>69,41</b>	<b>0,13</b>

Our waste policy is to maximally reduce waste at the source and, inasmuch as possible, to sort, reuse, recycle or recover it. Waste is sorted on our site in production and is processed through approved treatment or recovery channels. All waste leaving the site is traced in accordance with the waste register. Some packaging waste is reused internally to favour reuse.

At the end of 2017, the NHIW compactor and cardboard bales were replaced by rolling bins with weekly collection for ordinary waste, and by a compactor for recyclable waste, namely cardboard, plastic, glassine and paper.

In 2019, blister-type plastic waste from production is no longer recovered due to developments in the increasingly restrictive recycling regulations. This waste is therefore measured in rolling bins.

In 2020, the production line generating this blister waste must stop.

Note that the amount of recycled waste has been gradually increasing over the last 3 years.

## **"BIODIVERSITY" INDICATOR**

**Objectives:** Limit industrial risks and environmental pollution.

**Means:** Sustainable mowing of undeveloped plots.

Project to develop the plant in a sustainable manner.

### **Results:**

LAND USE	2017	2018	2019
Land area (m <sup>2</sup> )	13994	13694*	13694
Built-up zone (m <sup>2</sup> )	4100**	3200	3200
Paved area (m <sup>2</sup> )	-	2750	2750
Green space (m <sup>2</sup> )	8214	7744	7744
Land Use Coefficient (built-up area/total area)	0,29	0,23	0,23
Green space Land Use Coefficient	0,59	0,57	0,57

The geographical area we are located in is a site dedicated to industrial activities that does not constitute a specific habitat for flora and fauna. Note that our land use coefficient, 0.23, remains much lower than the authorised coefficient in the area's development plan, which is 0.60 (built-up area compared to the total area).

Following our environmental analysis and our regulatory review, we were able to verify that impacts on biodiversity do not emerge as a significant environmental aspect in relation to any of our activities.

There has been no significant change in the Biodiversity indicator, despite construction of a new car park to facilitate co-activities between freight transport and our staff during shift changes.

\* : The total land area was updated in 2018 following a new cadastral survey.

\*\* : Note that the built-up area in 2017 took into account the new social premises and the first new parking area, which are not part of the built-up area.

## ATMOSPHERIC EMISSIONS

**Objectives:** Limit industrial risks and environmental pollution.  
Limit business travel.

**Means:** Monitoring of atmospheric releases. Purchase of a video conference system in 2018.

### Results:

EQUIPMENT TYPE	PARAMETERS	UNIT	LIMIT VALUES	MEASURED VALUES 2017	MEASURED VALUES 2018	MEASURED VALUES 2019
Boiler	CO	mg/m <sup>3</sup>	100	3,00	0,00	0,00
	NOx	mg/m <sup>3</sup>	450	60,00	2,00	0,00
Incinerator	CO	mg/m <sup>3</sup>	100	5,00	0,00	0,00
	NOx	mg/m <sup>3</sup>	450	60,00	43,00	52,00

There are no atmospheric emissions at the production level, only the boilers release into the atmosphere.

With our boilers, only the values indicated in the table above (CO and NOx) are measurable.

Please note that our atmospheric emissions are much lower than the regulatory limits.

## FINISHED PRODUCTS

**Objectives:** Offer customers more environmentally friendly solutions.

**Means:** Implementation of a new product catalogue via standardising certain packaging and formulations.

Development of new, more environmentally friendly packaging (use of bio-sourced and/or recycled plastic, under study).

### Results from productions manufactured in Val d'Izé:

PRODUCTS BY FORMULATION TYPE	2017 (kg)	2018 (kg)	2019 (kg)
AL – Contact liquid or gel (= AL+ CL + LV + ULV)	567 219	355 425	378 404
CS – Capsule suspension	8 459	64 181	21 417
EC – Emulsifiable concentrate	42 076	112 717	50 524
FD – Fumigator	5 338	11 309	9 556
GB – Granulated Bait	20 481	18 178	0
MEC – Microemulsion	0	2 659	4 080
MG – Microgranules	84 213	14 351	0
*PA - Paste	-	-	53,761
RB – Ready-to-use bait	86 538	56 037	71 385
CS – Concentrated suspension	288	10 266	648
SG - Water-soluble granules	15 645	7 956	0
<b>TOTAL</b>	<b>830 257</b>	<b>653 079</b>	<b>536 068</b>

In order to improve the pertinence of our ratios relating to the industrial activity in Val d'Izé, only on-site manufacturing is counted from now on. This adjustment is now possible because the relocation programme for certain productions has been completed.

This improvement has also been made retroactively to 2017 and 2018, with all the ratios in the previous sections being updated according to the new updated quantities

\* : Following a new formulation, launched in 2019, a new category has been added to the table:  
PA = Paste, water-based, film-forming.

# ENVIRONMENTAL PERFORMANCE

AT KWIZDA, WE BELIEVE THAT QUALITY,  
ECO-COMPATIBILITY AND THE LINKS THAT  
UNITE US WITH OTHERS ARE ESSENTIAL  
CONDITIONS FOR OUR SUCCESS.



# 05

# ENVIRONMENTAL PERFORMANCE

## 2019 PROGRAMME

NO.	ENVIRONMENTAL OBJECTIVE	ACTIONS	REDUCTION EXPECTED	REDUCTION OBTAINED	COMMENTS	STATUS
1	Reduction of production HIW	Improvement of sorting in the workshop. Decrease in production waste.	-3% / kg produced	+4.1% / kg produced	2019 targets defined without taking into account shutdown of the powder line, which generates very little waste.	Unfinished Postponed until 2020
2	Reduction of NHIW in production	Improvement of sorting in the workshop. Search for a recovery process for some NHIW.	-3% / kg produced	+2,6% / kg produced	Due to non-conformant products, additional manufacturing had to be carried out.	Unfinished Postponed until 2020
3	Reduction in the proportion of our sales volume in 100% plastic packaging	Development of new packaging (cardboard/plastic) with acquisition of a new ETPack machine.	-80 %	-82%		2019 target achieved New 2020 target set
4	Prevention of environmental risk	Create an unloading area dedicated to the removal of liquid HIW and gas delivery. At the end of 2019, work not completed due to weather conditions (spring 2018) and subcontractors.	NA	NA		Complete Summer 2019
5	Reduce consumption of electricity	Change over to LED lighting (administrative + production).	Depending on the models in place	NA	Change implemented in 2019. Effect measurable in 2020.	Complete New 2020 target set



NO.	ENVIRONMENTAL OBJECTIVE	ACTIONS	REDUCTION EXPECTED	REDUCTION OBTAINED	COMMENTS	STATUS
6	Use "Organic" active ingredients	Improve our formulations by exchanging current active ingredients with greener active ingredients.	NA	NA	Managed by Group R&D	Unfinished 2025 objective
7	Integrate subcontracting activities and different types of suppliers into the life cycle and environmental analyses	Update life cycle and environmental analyses.	NA	NA	Company decision to focus work on updating the ratios, with retroactivity over previous years.	Unfinished Postponed to 2020 target
8	Analyse the environmental impact of our suppliers (AES 14 to 22)	Verify that all of our suppliers (material, component and service) follow an environmental approach.	NA	NA	Questionnaires sent and collected from our hauliers.	Unfinished 2021 objective

## ENVIRONMENTAL OBJECTIVES FOR THE 2020 PROGRAMME

The environmental objectives for 2020 are based on quantitative assessment of environmental aspects resulting from the environmental and context analyses.

NO.	ENVIRONMENTAL OBJECTIVE	ACTIONS	REDUCTION	BY	DATE
1	Reduction of production HIW	Continue sorting in the workshop. Reduction of production waste (see objective 6).	-1% / kg produced	Resp. QHSE	Dec. 2020
2	Reduction of NHIW in production	Continue sorting in the workshop. Search for a recovery process for some NHIW.	-1% / kg produced	Resp. QHSE	Dec. 2020
3	Reduction in the proportion of our sales volume in 100% plastic packaging	Development of new packaging (cardboard/plastic) with acquisition of a new ETPack machine in 2017. No 100% plastic packaging should be sold in 2020.	100% (vs 2017)	Commercial Dir.	Dec. 2020
4	Eliminate plastic cups at the site	Stop buying plastic cups, and deplete our remaining stocks.	100%	Res. QHSE/ Purchasing Resp.	Dec. 2020
5	Reduce consumption of electricity	In 2019, switch to LEDs for administrative and production lighting. Effect measurable in 2020.	Depending on the models in place	Site Dir.	March 2021

NO.	ENVIRONMENTAL OBJECTIVE	ACTIONS	REDUCTION	BY	DATE
6	Reduce our water consumption	Find a new barrel cleaning process that consumes less water.	-80% per wash cycle	Site Dir.	March 2021
7	Integrate subcontracting activities and different types of suppliers into the life cycle and environmental analyses	Update life cycle and environmental analyses. Wants to integrate this approach with the hygiene approach launch in 2020. Group discussion for management of subcontractors, not located in Val d'Izé	NA	Resp. QHSE/ Purchasing Resp.	Summer 2021
8	Analyse the environmental impact of our suppliers (AES 14 to 22)	Verify that all of our suppliers (material, component and service) follow an environmental approach.	NA	Resp. QHSE/ Purchasing Resp.	Summer 2021
9	Increase our proportion of recycled materials	Find a new material made from a minimum of 40% bio-sourced and/or recycled plastic for our main packaging (small bait box).	+40%	Site Dir.	2021
10	Use "Organic" active ingredients	Improve our formulations by exchanging current active ingredients with greener active ingredients.	NA	R&D	2025

Results for these objectives will be measurable in 2020 and subject to assessment in the EMAS 2021 declaration.

## APPLICABLE ENVIRONMENTAL LEGAL EXIGENCIES

Below is the main list of texts taken into consideration by the Val d'Isère site.

### Site subject to ICPE regulations under heading 4510 (declaration)

- // Environment, Energy, Urban Planning and Labour Code
- // REACH Regulation
- // Biocides Regulation
- // EMAS V Regulation 2009
- // ISO standard 9001 V 2015
- // ISO standard 14001 V 2015
- // ISO standard 45001 V 2018





**EMAS**

## VALIDATION OF THE ENVIRONMENTAL DECLARATION

### **DÉCLARATION ENVIRONNEMENTALE VALIDÉE PAR BUREAU VERITAS CERTIFICATION FRANCE**

En accord avec le règlement européen **CE EN 1221/2009** modifié par le règlement **(UE) 2017/1505** et le règlement **(UE) 2018/2026** relatifs à la participation volontaire des organisations à un système communautaire de management environnemental et d'audit (EMAS).

Vérificateur : Séverine SUDAN

Date: 10/07/2020

Signature :



N° d'accréditation de Bureau Veritas Certification France : 4-0002 / Certification de systèmes de management.  
Attestation en vigueur, liste des sites et portées disponibles sur [www.cofrac.fr](http://www.cofrac.fr)



**THE PEOPLE INVOLVED IN THE PREPARATION OF THE ENVIRONMENTAL DECLARATION ARE:**

Philippe Delacroix, Val d'Izé plant Director (Kwizda Biocides)

Anne-Gaël Le Calvez, QHSE Manager (Kwizda Biocides)

---

**CONTACT****Kwizda France SAS**

30, Avenue de l'Amiral Lemonnier  
78160 Marly-le Roi  
Tél.: +33 1 39 16 09 69  
Fax: +33 1 39 16 47 07

**Kwizda France SAS**

ZA du Bourgneuf, Route de Dourdain  
35450 Val d'Izé  
Tél. : + 33 2 99 49 77 70  
Fax : + 33 2 99 49 77 79

**Contact :**

**Philippe Delacroix**  
Responsable OM  
Tél.: +33 2 99 49 77 72  
phd@kwizda-france.com



TWO THOUSAND TWENTY